

# DDI 4

## Library

Core +

Conceptual +

Study +

Data +

Process +

Geography +

Instrument +

Methodology +

## Views

Data discovery +

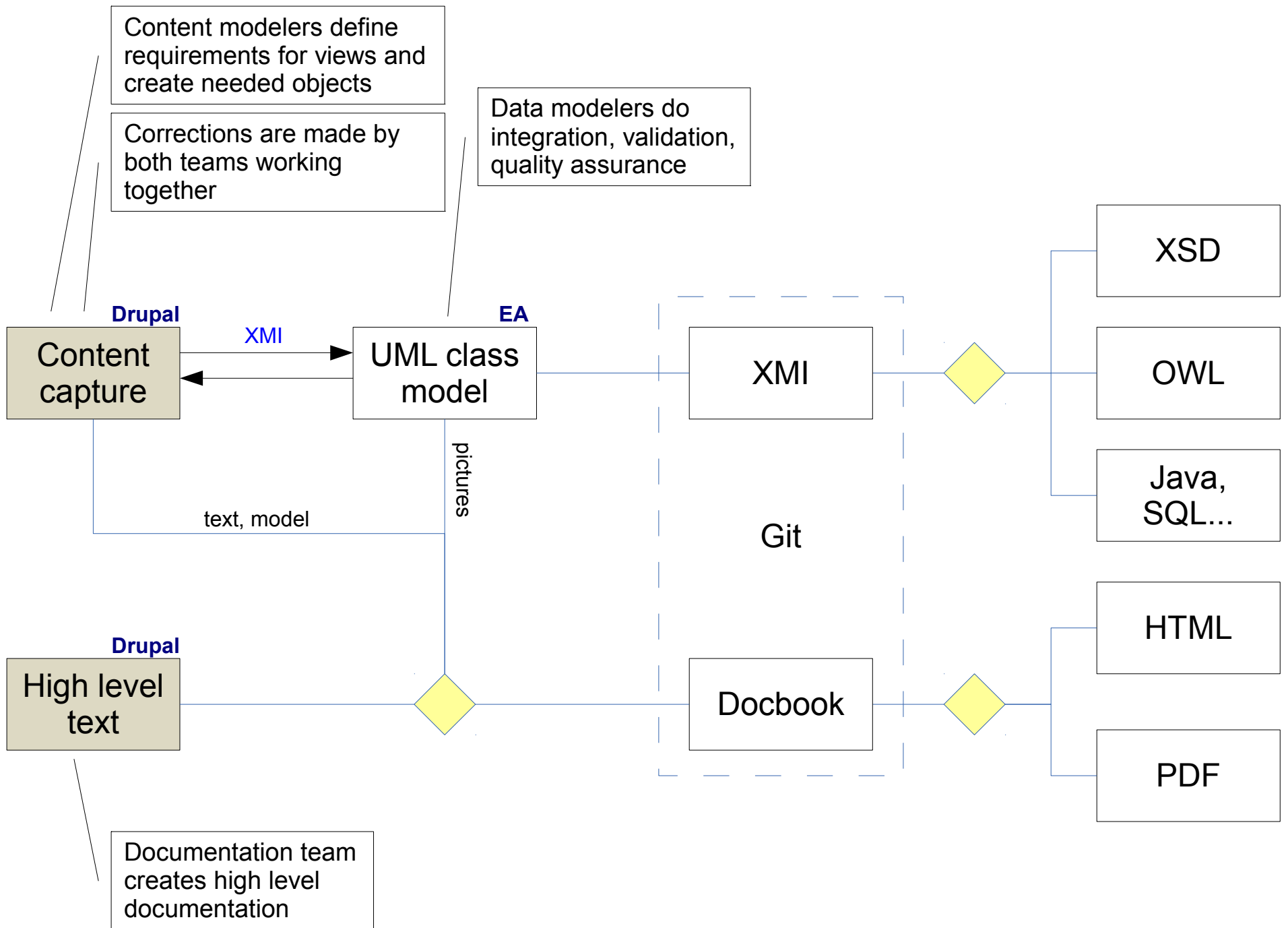
Questionnaire design +

Study description +

Code book +

Citation +

...



Content modelers define requirements for views and create needed objects

Drupal

Content capture

EA

UML class model

Content modelers export their work to the UML repository

Drupal

Content capture

XMI

EA

UML class model

Data modelers do integration, validation, quality assurance

Drupal

Content capture

EA

UML class model

Corrections are made by both teams working together

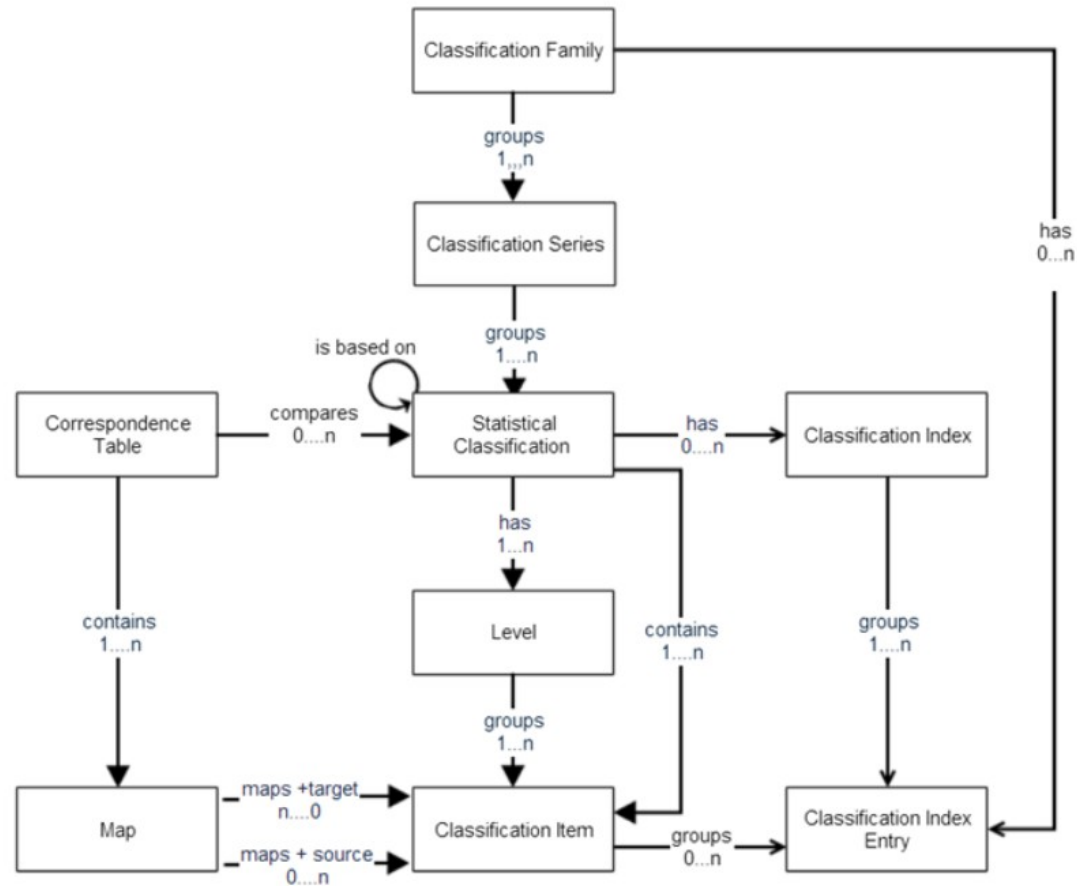
Drupal

Content capture

EA

UML class model

# Classifications – GSIM to XKOS

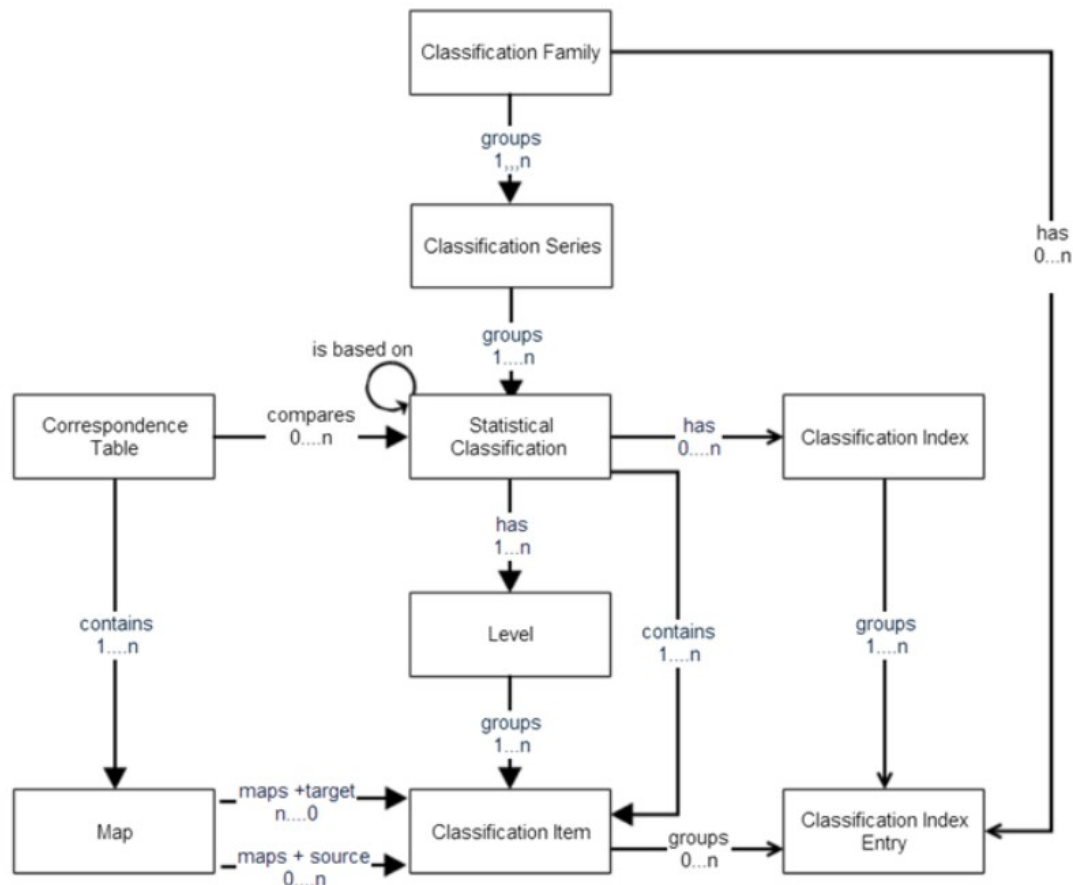


**GSIM**

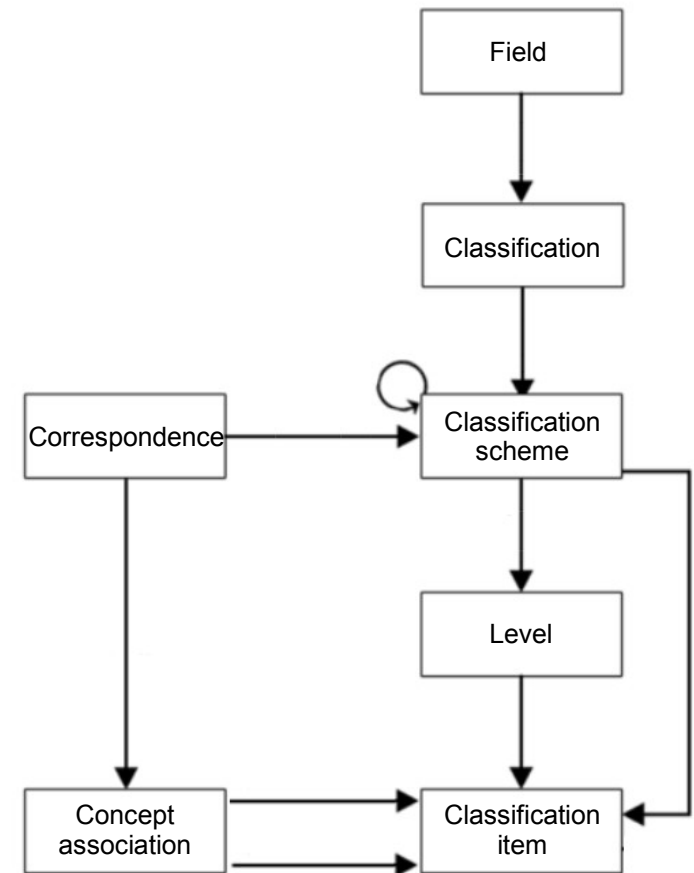
**XKOS**

Indexes are out of scope for XKOS

# Classifications – GSIM to XKOS



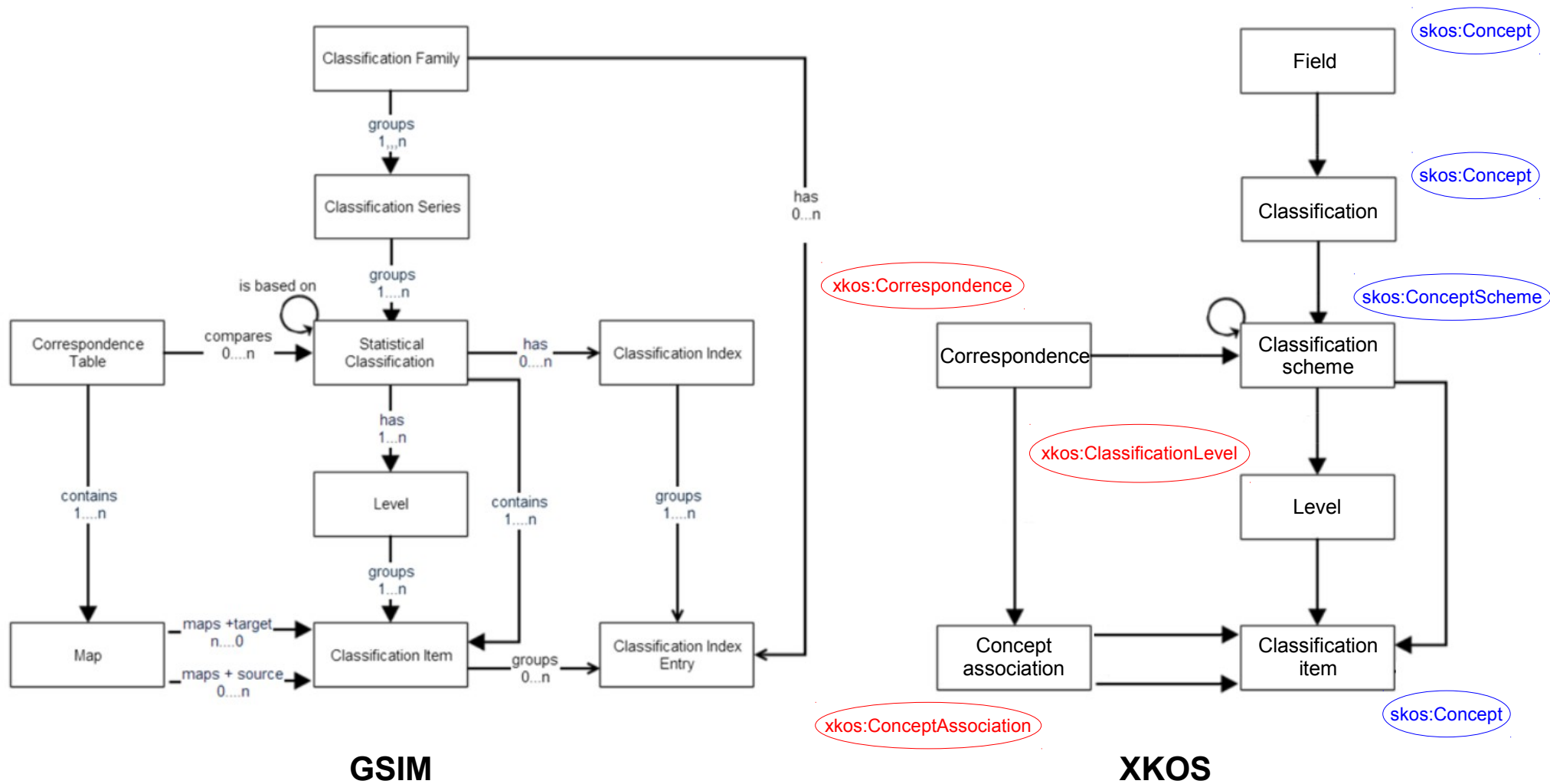
**GSIM**



**XKOS**

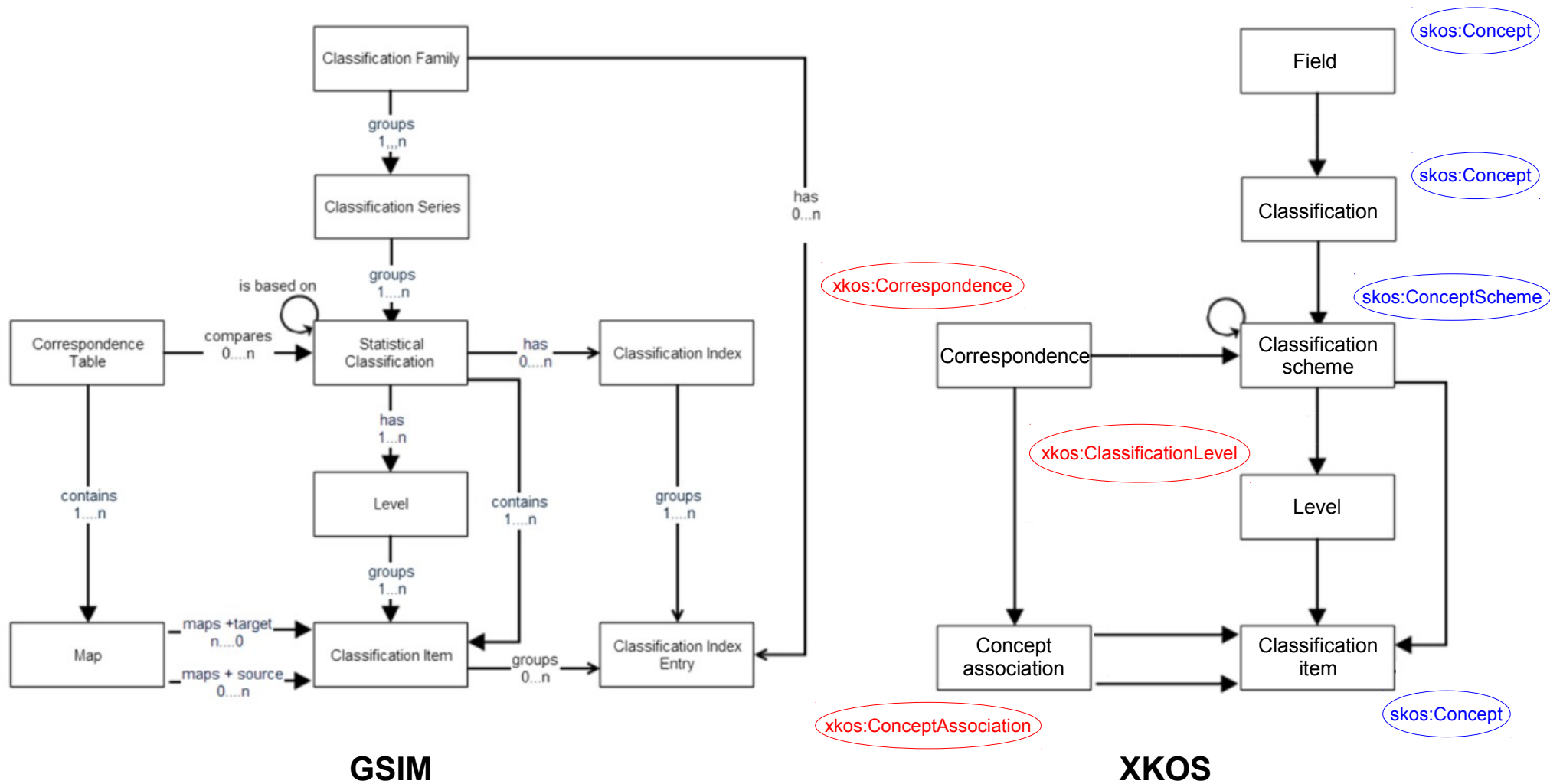
XKOS uses different object names

# Classifications – GSIM to XKOS

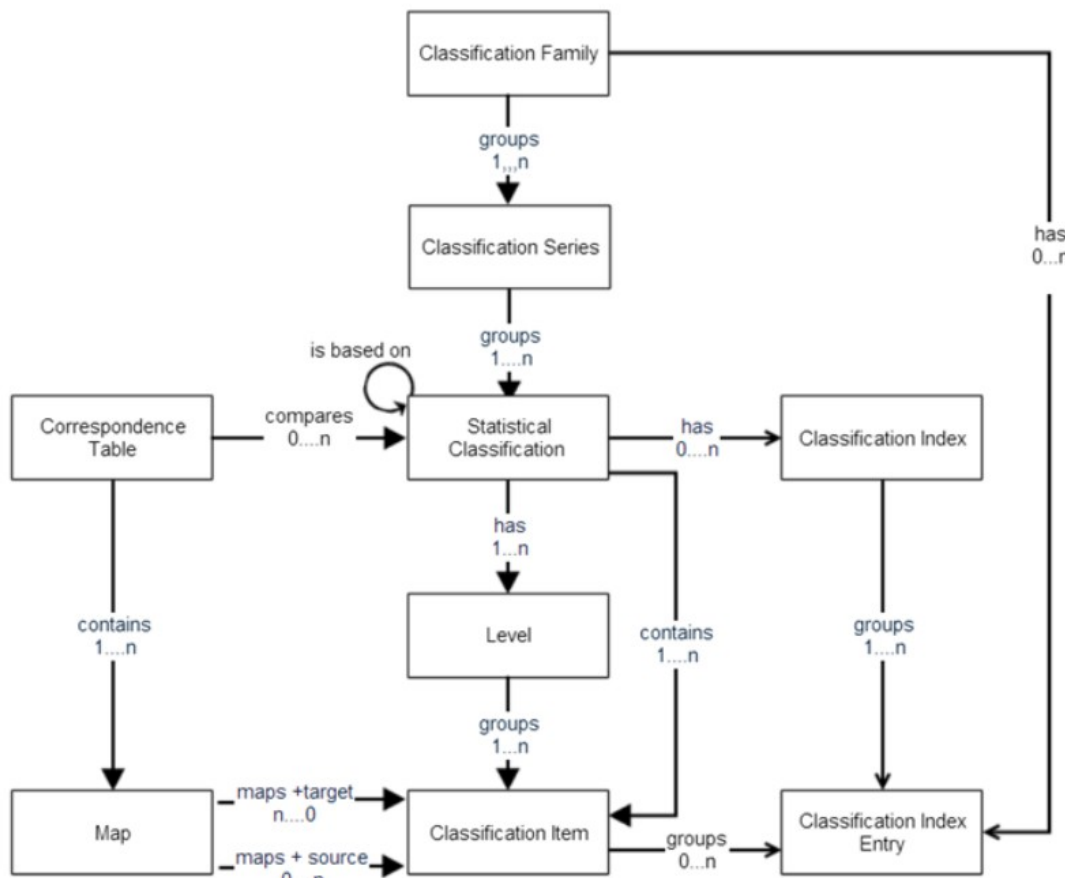


XKOS is based on SKOS with additions

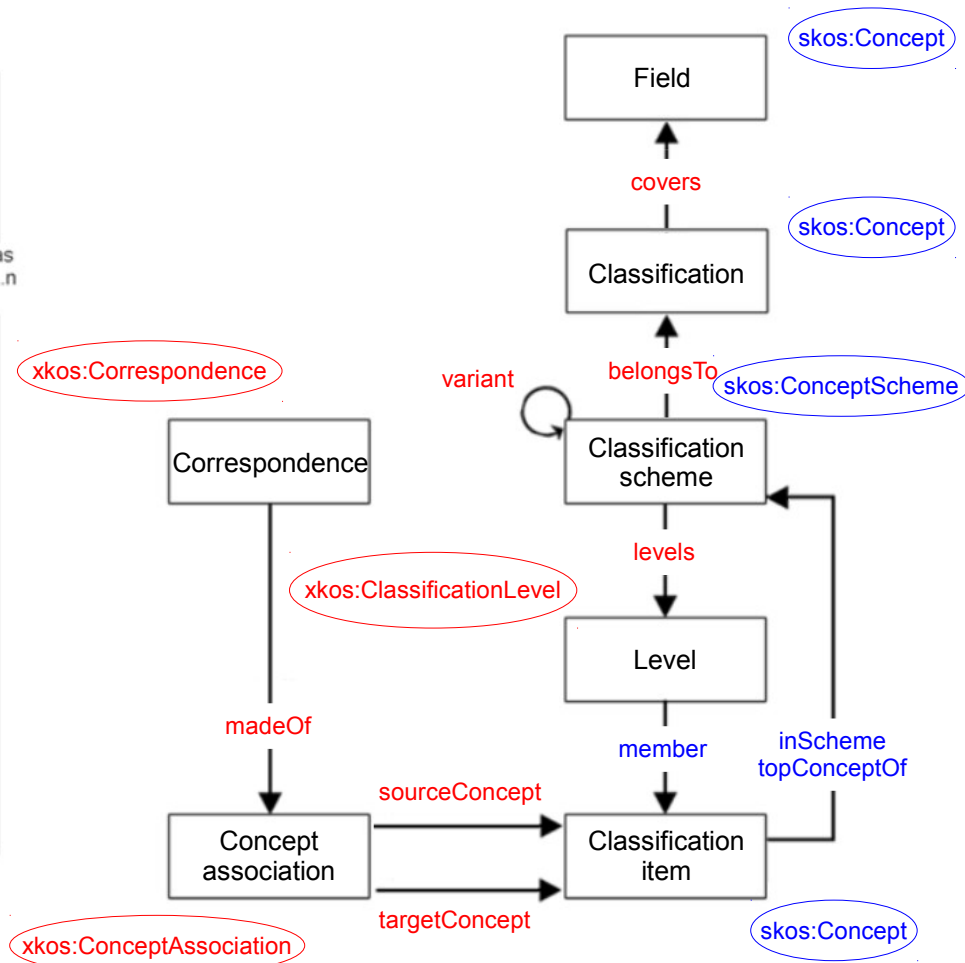
# Classifications – GSIM to XKOS



# Classifications – GSIM to XKOS



**GSIM**



**XKOS**

XKOS uses different property names and directions